

**Barnwell Road, Brixton, SW2**

2 bedroom flat - conversion for sale

**£565,000**

Leasehold

## Property Details

This beautifully finished two double bedroom flat occupies the first floor of a charming period conversion on Barnwell Road, a peaceful street in the heart of Brixton. The unique layout is thoughtfully designed, blending contemporary style with period character, and benefits from an elevated position with multiple sash windows that create a bright, airy feel throughout. At the front, a spacious open-plan reception features bold navy walls, neutral flooring, and ample room for both dining and relaxing. A sleek, modern kitchen with integrated appliances completes the sociable living space. Both bedrooms are generously sized doubles with built-in wardrobes. The principal bedroom offers a calm retreat with a characterful layout, while the second is bright and versatile, ideal as a guest room, office, or nursery. The bathroom is smartly finished with a full-sized tub and overhead shower. Situated within close proximity to Brockwell Park, Herne Hill, Brixton Village, and excellent transport links, making this a stylish and well-located home.

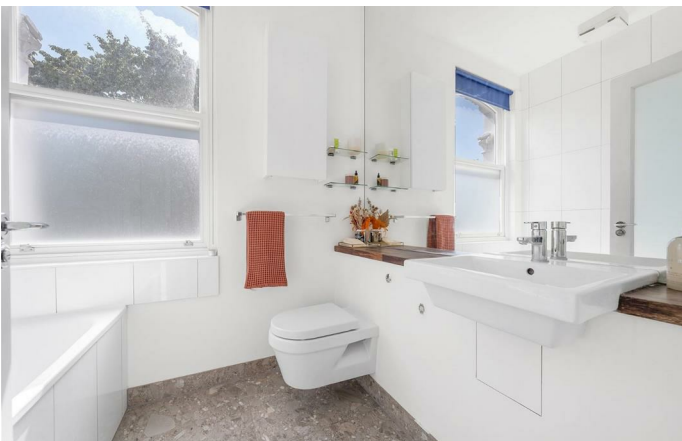
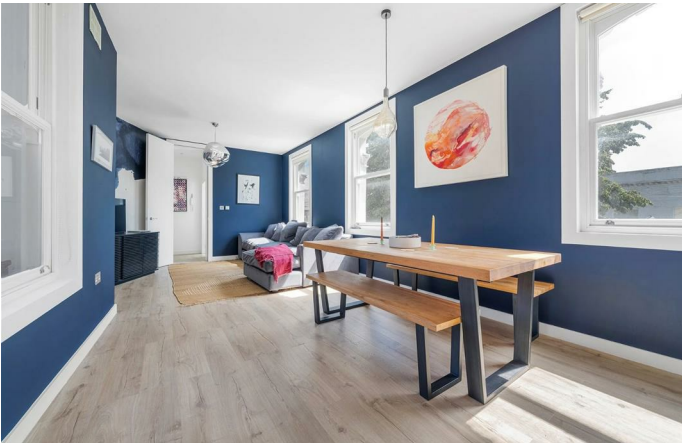
Council tax band D

EPC rating C (70)

## Features

- Two double bedrooms
- Victorian conversion
- Beautifully presented
- Underfloor heating throughout
- Bright and airy
- Sought-after location in between Brixton and Herne Hill
- Close to Brockwell Park
- Local amenities in moments
- Twelve minute walk to Brixton tube station
- Victoria Line, Thameslink and Overground

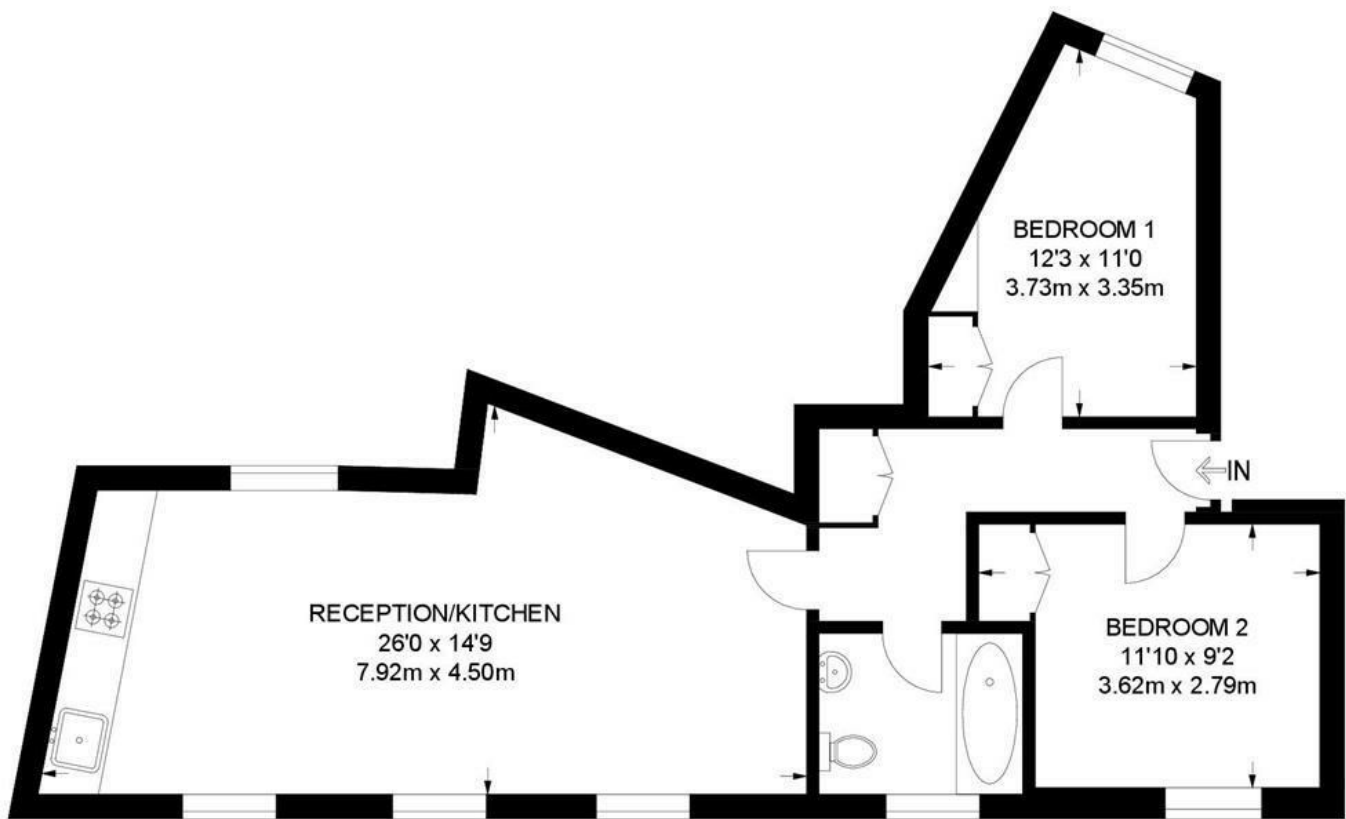




Barnwell Road, Brixton, SW2

**Barnwell Road, SW2**  
**2 Bedroom Flat**

APPROXIMATE GROSS INTERNAL AREA: **579 SQ FT / 53.8 SQ M**



**FIRST FLOOR**



While we try our very best, floor plans are produced as a guide only and we take no responsibility for the precise accuracy with which any property is represented.



Barnwell Road, Brixton, SW2

